

GREAT SHELFORD PARISH COUNCIL

ANNUAL PARISH MEETING

17th April 2019

A G E N D A

1. Apologies for absence.
2. Approve Minutes of the Annual Parish meeting held on 18 April 2018.
3. Chairman's Report (Mike Nettleton).
4. Key issues and projects for the Village:
 - Traffic and parking issues (Mike Nettleton).
 - Memorial Hall and car park (Malcolm Watson).
 - Crime & policing (Mike Nettleton).
 - Provision of improved recreation facilities (Roberto Ghersemi).
 - Work with SSYI (Mike Nettleton).
 - Public toilets on Rec (Graham Townsend)
 - Banking (Mike Nettleton).
 - Social cohesion (Mike Nettleton).
5. Reports from the Parish's elected representatives
 - South Cambridgeshire District Council
 - Cambridgeshire County Council
6. Reports from Chairs of Parish Council committees:
 - Planning (Roberto Ghersemi)
 - Cemetery & Allotments (Richard Davies)
 - Recreation Ground & Pavilion (Malcolm Watson)
 - Highways (Stefan Harris-Wright)
7. Reports from the Village's representatives bodies:
 - Neighbourhood Plan (Barbara Kettel)
 - Playscape
 - Governing Body of Great and Little Shelford Primary School
 - Governing Body of Sawston Village College
 - Great Shelford Community Association
 - Mobile Warden Scheme (David Nunn)
 - Shelford and Stapleford Youth Initiative
 - Great Shelford Village News
 - Great Shelford Cricket Club
 - Great Shelford Football Club
 - Shelford & Stapleford Strikers Football Club
 - Great Shelford Bowls Club
 - Great Shelford Parochial Charities
 - Shelford Twinning Association (Colin Jefferson)
 - Great Shelford Tennis Club
 - Feast
 - Scouts & Guides
 - Great Shelford WI
 - St Mary's bell ringers

Note: no reports received from Police.
8. Financial statements:
 - Parish Council Summary of Accounts and Balance Sheet for year 2018/2019 (Mike Winter, Parish Clerk)
9. AOB – items not on the agenda which residents wish to debate with the Parish Council.
10. Close Annual Parish Council meeting.
11. Refreshments and informal discussion.

Please Note: Although this meeting is open to the public, only those residents included in the current Register of Electors are entitled and permitted to speak and vote. However, residents of the Parish who are not listed may, at the discretion of the Chairman, be permitted to speak on any item of the agenda. Residents who are in doubt about their inclusion in the Register will be able to confirm this, or otherwise, from an inspection copy of the Register prior to the meeting.

Agenda Item 1.

Receive apologies for absence

Agenda Item 2.

Approve Minutes of the Annual Parish meeting held on 18th April 2018

Agenda Item 3.

Chairman's Report (Mike Nettleton).

Parish Council Chair Statement for Year 2018-2019

Recreation and Pavilion

- Installation of new mains drainage, water, electricity and Internet for Feast, Playscape and general use.
- Playscape planting and general improvements continue.

Highways

- Failed to get grant towards cost of pedestrian crossing in Cambridge Road.
- Parking continues to be major issue.

Planning

- Continuing high volumes of planning applications to be reviewed – 192 in 2018/19.
- Large amount of work done on external proposals, e.g. Greater Cambridge Partnership, Wellcome Trust.

Cemetery and Allotments

- Allotments are available

Communications

- Further improvements to Parish Council website and website.
- Over 200 residents now receive regular updates from the Parish Council.

Personnel

- Parish Council election on 2 May – three candidates (Paula Arnold, Theo Wilson and Greg Price) nominated for two vacancies.
- Two Councillors, Angela Milson and Mark Carey, have resigned during the year.
- We are seeking to recruit a further Deputy Clerk.

Finally

- I would like to thank all my fellow councillors for their support and hard work.
- We should mention the village's 'unsung heroes' – people like Eleanor McCrone and the Playscape team, the school PTA, the Feast Committee, the Village News team, individuals like Helen Harwood, Bridget Hodge and John Wakefield.
- Also Mike Winter our Parish Clerk, Gerard Winter his deputy and Seamus Fegan, our Village Man.

Mike Nettleton

Chairman Great Shelford Parish Council

Agenda Item 4.

Key issues for the Village : Mike Nettleton, Chair Parish Council

a) Traffic and parking issues.

- Traffic volumes in the village continue to grow and there is no prospect of pressure reducing – full opening of CBC, Wellcome Trust, Agritek, North Uttlesford Garden village, Huawei on Spicers site.
- GSPC has no wish to see major improvements on A1301 – this would simply increase traffic. Rather, we are pressing for improvements to roads which would take traffic away from the village – e.g. A505, A1307 and for improvements to public transport.

- **Parking:**

The village is full.

Situation will worsen with new care home, commuters to CBC, etc.

Police enforcement non-existent.

GSPC continues to press for introduction of CPE (Community Parking Enforcement), but

Police, CCC and SCDC lack the will to go down this route.

b) Memorial Hall and car park

- Project delayed because of other commitments.
- Waiting response from architects on Feasibility Study.
- Consultation with groups in the village continues.
- Contact Malcolm Watson for more details.

c) Crime & Policing

- Levels of crime and anti-social behaviour in the village appear to be increasing, particularly over the last 12 months.
- Police have had headcount cuts; however, their response is not robust. Police no longer treat parking violations, anti-social behaviour, domestic burglary and even arson as priorities. No one has been arrested following the two ram raids which took place in the village.
- GSPC has introduced private security patrols around the Rec at a cost of over £4,000p.a. Also spending money on further security measures, such as CCTV. We engage with Police at every opportunity, but with no tangible result.
- Police surgeries have been resurrected which allows face to face discussions with our local PCSO, dates in the Village news.

d) Provision of improved recreation facilities

Since Great Shelford is clearly undersupplied with recreational space, as evidenced by the standards laid down by the NPFA and current practical difficulties in providing facilities, The Grange field adjoining the Recreation Ground is an obvious choice for the specified area to be merged with the existing Recreation Ground to provide additional recreational space.

The Parish Council has sought to acquire the adjoining Grange Field for many years and similarly all approaches have been rejected unless any purchase price reflects the right to develop the field for residential purposes.

- GSPC will be actively progressing the purchase for recreational use only over the coming months.

e) **Work with SSYI (Shelford & Stapleford Youth Initiative)**

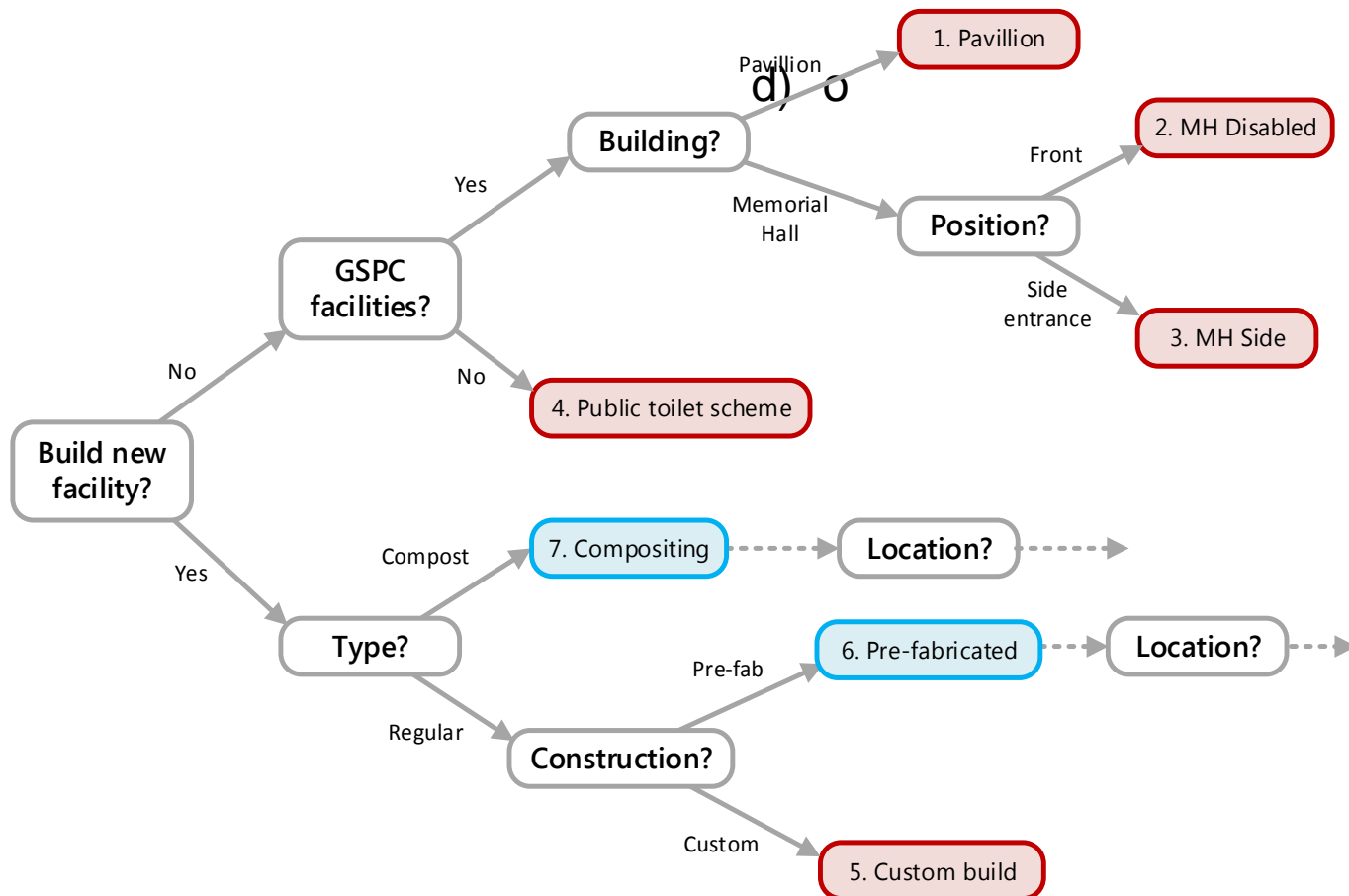
- GSPC is trying to take a carrot and stick approach to reducing anti-social behaviour, particularly among older teens. The 'stick' is the security patrols and additional security measures mentioned earlier. The 'carrot' is trying to provide better facilities and engagement.
- Take the 'bandstand':
 - We have installed seating after requests from teens.
 - Playscape have recently run a competition for a design to brighten up the bandstand; planned for this summer.
 - We intend installing lighting, WiFi and USB charging in the bandstand.
- Crucial part of the strategy is partnering with SSYI to improve engagement with teens:
 - Already run youth clubs Tues and Fri nights.
 - Installed table tennis table in the youth club (donated by Des Chalk).
 - GSPC is granting SSYI a dedicated lease of the club room above the MH at a peppercorn rent. Also providing additional funding through community grants (S137) to increase engagement with local teens.
 - SSYI has started some initial refurbishment works.

f) Public Toilets on the Recreation Ground

General Constraints

- Any installation would need to be highly vandal-resistant.
- Any public toilet would need to be available seven days a week, during daylight hours.
- Any option should not reduce the number of available parking spaces.
- Any option must be within the budget of £30,000.

Major Options Explored



Option 1: Pavilion – Existing Toilets

Still under consideration: No

- The existing Pavilion toilets appear ideal for use as a public toilet.
- Insurance providers will only allow the use of these toilets if one of these conditions is met:
 - Somebody will always be on-site whenever the toilets are open for public use
 - The public toilets are only accessible from the outside, with no means to gain access into the rest of the building.
- We do not intend to pay for an all-day toilet attendant and think it is unlikely volunteers will be available for regular coverage.
- We do not think there is any cost-effective way in which to reconfigure these toilets for outside access, without significant changes to the construction of the building.

Option 2: Memorial Hall – Existing Disabled Toilet

Still under consideration: No

- The disabled toilet at the front of the building is an appropriate size for a public toilet with disabled and child-changing facilities.
- The same insurance concerns apply as for the pavilion.
- A proposal to place a new external door on the outside of the memorial hall, to provide access to the existing disabled toilet, was explored.
- New disabled facilities would need to be provided within the memorial hall and other existing toilets inside the building would need to be adapted.
- Placing a new entrance on the front of the building is expected to meet resistance in terms of planning and visual appearance.
- The incoming electrical supply for the memorial hall appears to enter through the disabled toilet; and would need to be moved to negate the risk of vandalism.
- The cost of the total project was expected to be higher than constructing an entirely new standalone facility.

Option 3: Memorial Hall – Side Entrance.

Still under consideration: **No**

- There is a small door on the left-hand side of the Memorial Hall (as viewed from Woolards Lane) which was expected to have less visual impact than option 2.
- The same insurance restrictions apply as for options 1 and 2.
- The door opens to a small space under the stairs to the formal Sports and Social Club.
- The existing boiler in this space would need to be removed.
- The door would need to be widened to accommodate a wheelchair.
- To make adequate space, the wall which separates this area from the gentleman's toilets would need to be removed and pushed at least 1.4 metres back to meet regulations. This would involve refitting the existing gent's toilets to fit the remaining space.
- It would be necessary to place bollards outside the side entrance to protect pedestrians from vehicles. This would potentially cause issues with access to a number of parking spaces.
- The cost of the project was expected to exceed constructing a new standalone facility.

Option 4: Community Toilet Scheme

Still under consideration: No

- Some areas, such as East Hertfordshire, have a scheme asking local businesses to open their customer toilets for public use, in exchange for a small payment.
- These schemes do not appear to have been a large success, with the main takers appearing to be large chains (such as Costa Coffee) and pubs.
- There are very few of these businesses near the recreation ground, which would seem a good fit with this type of scheme.

Option 5: Custom-Build Standalone Toilets

Still under consideration: **No**

- Most new public toilet facilities are provided in a pre-fabricated form to keep the cost down. A custom-built unit would be appropriate if we had a suitable location that we can blend it into.
- We do not appear to have any location which would appear to warrant this.

Option 6: Pre-fabricated Standalone Toilet

Still under consideration: **Yes**

- There are multiple options for where this could be located (details further down).
- This would require a suitable foundation to be constructed – usually a concrete slab, but some allow less conventional options.
- Utility connections (electricity, water and sewage) would also be required to be dug and installed.
- The units are usually delivered by a flatbed truck and lifted into place via a crane. Ideal locations to minimise cost are near to a road or car park, with no overhead trees.

Option 7: Pre-fabricated Standalone Composting Toilet

Still under consideration: **Yes**

- Similar to option 6, but does not require utility connections.
- Cost is significantly cheaper than a regular toilet.
- Usually installed in parks or allotment areas where utility access is an issue.

Decision Point for the Parish Council

Options for Toilet Vendor and Design

Recommendation is option 6B due to the combination of features and being relatively close to the original budget.

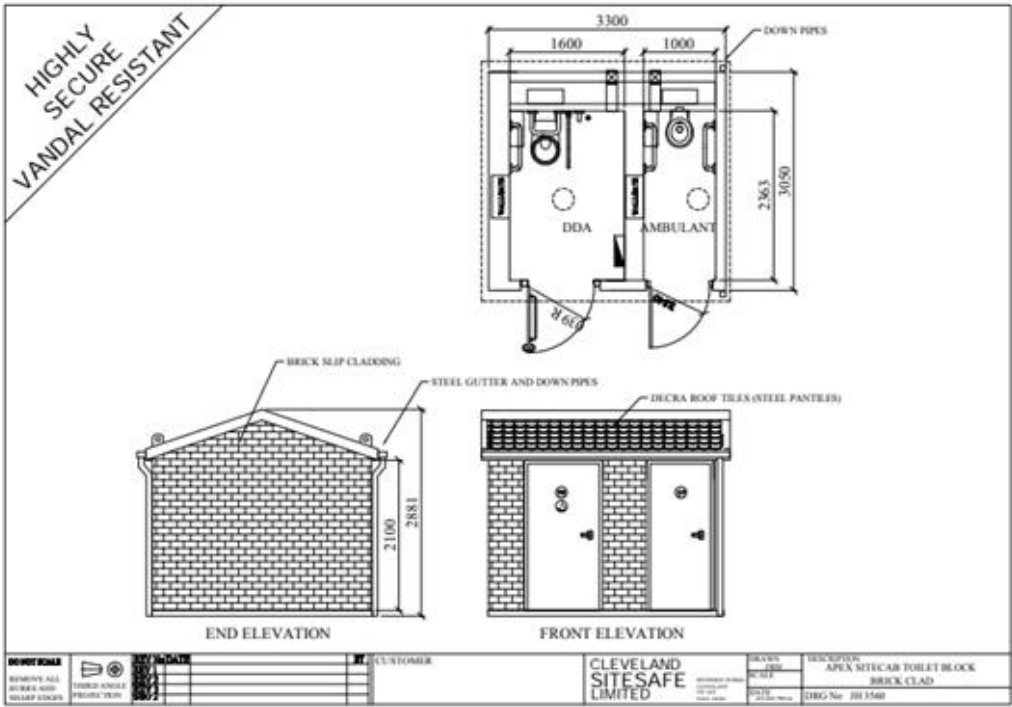
Option 6A – Healthmatic Pre-fabricated Single Toilet

- Estimated cost: £54,000 - £59,000 + VAT (£49,000 for toilet unit, cladding, installation and delivery, £5,000 - £10,000 for groundworks and utility connection).
- Consists of a single DDA unit. Large choice of custom cladding options to suit location. Includes vandal-resistant doors, walls and sink/basin. Doors include automatic locking and charging options.



Option 6B – Cleveland SiteSafe JH3560

- Estimated cost: £26,200 - £31,200 (£21,200 for toilet unit, delivery and installation, £5,000 - £10,000 for groundworks and utility connection).
- Consists of two toilets – one DDA and one unisex. Stainless steel toilets and basins, plasterboard interior.



Option 6C – Maxispace New Build Container Toilet

- Estimated cost: £10,230 - £15,230 + VAT (£5,230 for unit and delivery, £5,000 - £10,000 for groundworks and utility connection).
- Consists of a single DDA unit with changing facilities. Local company based near St. Neots.
- Note: Illustrative picture shows two units and extra wood cladding.



Option 7A – Healthmatic KL2 Dry (Composting) Toilet

- Cost: £14,100 + VAT (£1,100 preliminaries, £4,000 groundworks and installation, £9,000 design, supply, delivery).
- Single composting toilet, very low maintenance.



Next Considerations

Options presented at the Annual Parish Council meeting on 17th April 2019.

Location

Decide the location for the standalone toilet.

- Three options have been selected for discussion:

Option 1: Recreation Ground Entrance

Easy for access, yet high visible impact. Close to connections for utilities.

Option 2: Outside Pavilion

Far away from the street, yet easy for parents with children to access when using the playground. Could be integrated into the proposed decking for the pavilion. Close to utility connections.

Option 3: Recreation Ground Entrance

Similar benefits to option 1, but less visible impact from the street.

Option 4 (Excluded): Boiler House

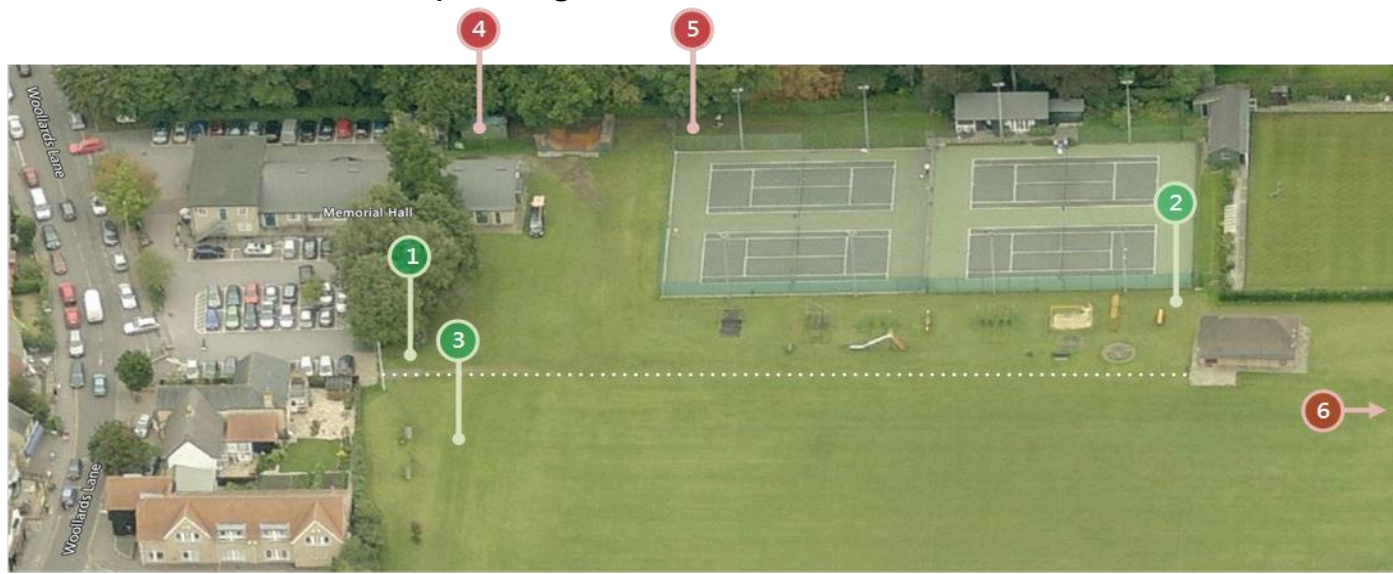
Already includes a foundation, but excluded since it would reduce the amount of parking space in the future.

Option 5 (Excluded): Behind Tennis Courts

Easy to access for installation and very little visual impact, but deemed too out-of-the-way for easy access.

Option 6 (Excluded): Beyond Pavilion

Very little visible impact, but deemed too far away for easy access. Utility connections likely to be expensive unless we choose a composting toilet.



g) Banking

- The Lloyds closure in Feb 2018, followed by the ram raids on the Coop and Barclays, have left the village without an ATM.
 - The Post Office in Hinton Way continues to provide cash withdrawals and some basic banking facilities.
- Barclays:
 - Public meeting held 5 Feb to gauge support for protests to Barclays.
 - Petition with 250 names asking for closure to be reconsidered has been sent to Barclays.
 - Barclays were asked in January to consider other options, e.g. mobile banking, but refused.
 - We have offered Barclays the possibility of shared premises and/or a location for an ATM. If they refuse to consider this, we will approach other banks.
- Tesco have been approached to see whether they would consider installing an ATM, seems unlikely.
- Same issue under discussion with the Coop.
- Cambridge Building Society have not been approached yet.

h) Social Cohesion

The village continues to grow and new people move in. It inevitably means that there is a danger that people know longer know each other and the village is not the tightly knit community it used to be. GSPC is trying to counteract this by bringing people together, for example:

- Much bigger and improved Christmas lights turn on and fair at the beginning of December.
- Big Lunch on 1 June.
- Rugby Club will be organising a fireworks display in November for the first time in many years.
- We are already getting a lot of help – PTA, Playscape, WI, Mobile Warden Scheme, Shelford Support Group to name just a few. We need more support and more ideas

❖ let's make the village a better place to live.

GREAT SHELFORD BIG LUNCH

SATURDAY 1 JUNE 12:30 MEMORIAL HALL

ORGANISED BY GREAT SHELFORD PARISH COUNCIL



Come and join your friends and meet new people over a two course lunch with a glass of wine, beer or soft drink in the Memorial Hall.

This is part of part of the national 'Campaign to End Loneliness', but any village resident is very welcome to join us; you don't need to be lonely (or have a head for heights!).

For information and tickets (£5 a head):

Mike Nettleton 721366/07905 356468

Great Shelford Library

Square & Compasses

Need a lift? – contact Shelford Support Group

Any offers of help (cooking, serving, washing up, whatever) really appreciated – please contact Mike

Agenda Item 5.

Reports from the Parish's elected representatives

- a) South Cambridgeshire District Council
- b) Cambridgeshire County Council

South Cambridgeshire District Council Annual Report

- **Local Plan**
- **Business Plan**
- **Mysouthcambs**
- **Empty Homes**
- **East West Rail Consultation**
- **Parking enforcement**
- **Contact your district councillors:**

Your Councillors are always ready to help. If you have any questions about these - or indeed any other - matters, please do not hesitate to contact

Nick Sample cllr.sample@scambs.gov.uk or **Peter Fane** cllr.fane@scambs.gov.uk

Cambridgeshire County Council Annual Report

- Annual General Meeting of Council
- The Council's aim to become more commercial in managing its assets.
- During the year there has been some good news on the funding front.
- Recent demonstration by school children during school time has provoked both support and criticism.
- The Council continues its efforts to transform the way it works,
- The Road Safety team's work with schools and its collaboration with Peterborough in the Road Safety Partnership both attracted awards.
 - Keeping children safe. Cambridgeshire County Council has been named as a TRAILBLAZING Authority
 - The new multi – disciplinary services includes practitioners from;
Adult mental health, Substance and alcohol abuse, Domestic abuse workers who work with both perpetrators and victims

We look forward to receiving any questions or comments that you have about the work of the County Council at your Annual Parish Meetings. My thanks go to Parish Councillors and Clerks and all those of you who have so generously served your communities during the year. I very much look forward to working with you again in the coming year.

Cllr Kevin Cuffley
Cllr Roger Hickford.

Agenda Item 6.

Reports from Chairs of Parish Council committees

- a) Planning: Joint Chairs Councillors Roberto Ghersemi and Barbara Kettel
- b) Cemetery & Allotments: Chair Councillor Richard Davis
- c) Recreation Ground & Pavilion: Chair Councillor Malcolm Watson
- d) Highways: Deputy Chair Councillor Stefan Harris-Wright

Planning

Overall activity and issues:

Year 2018-2019 considered 192 Applications. On the whole, our recommendations were upheld by the SCDC, with two significant exceptions: 160 Cambridge Road and the De Freville House COOP /Noel Young relocations.

CO OP:

Following submission in December 2017, the Coop revised their applications several times to respond to queries raised by planning and highway officers. Cambridgeshire Highways maintained their objection throughout, due to the apparent constraints of the site.

The Parish Council, suggested further revisions to the applications in the form of a Traffic Regulation Order to overcome highways concerns. In response, the Coop were informed that the applications were to be refused under delegated powers.

Due to the excessive delay in the application process and apparent lack of positive resolution, the landowners eventually decided to rescind the agreement with the Coop and look for new tenants for the site.

NOEL YOUNG:

Noel Young Wine Merchants PLANNING APPLICATION S/4542/18/FL, DE FREVILLE HOUSE, 56 HIGH GREEN, GREAT SHELFORD for “Change of use from furniture shop to mixed A1 (retail) and A4 (drinking establishment)” was opposed by Cambridgeshire County Council (CCC) as the Highway Authority had requested that the planning application be refused on the grounds of highway safety.

The primary reason for recommending planning refusal for the proposed development was on the basis of “engendering’ the unlawful stopping of vehicles within the mandatory cycle lane, forcing cyclists to overtake in the vehicle lane.”

The GSPC Planning Committee strongly disagreed with these objections, which were considered unfounded and made a strong representation to the SCDC, resulting in the application being finally approved

Care home:

Gillings Planning have approached GSPC for initial discussions regarding building a care home on the Shelford Energy site in Station Road. The proposed care home, to be built by Porthaven Care Homes, will provide 63 ensuite bedrooms and a wide range of amenity facilities (e.g. café, cinema room, gym and hair salon)

At this stage no planning application has been submitted

Wellcome Trust:

In January 2019 the Wellcome Trust presented to the GSPC a plan for a significant development of their existing site. Although this project does not fall under the direct remit of the GSPC Planning Committee, its effects will undoubtedly be felt by many surrounding communities, including ours.

While the Great Shelford Parish Council (GSPC) recognises the strategic importance of the project and supports the expansion of this world class scientific facility and consequent additional jobs creation, GSPC believes that the development may have a severe negative impact on the local transport infrastructure. This is not an attempt by GSPC to stop the project, rather to ensure that the necessary measures are taken to ensure that the project is a success and does not have a negative impact on local communities. We are convinced that these additional measures do need to be taken and the potential impact of the development should be considered holistically alongside other developments such as North Uttlesford, Hinxton Grange, Spicers, Agri-Tech, etc

Cemetery & Allotments

- **Cemetery**

- The Cemetery has been kept in good condition during 2018/19

- **Allotments**

- Both Stonehill and the Cemetery Allotment sites are well utilised but have vacancies for the coming season

Recreation Ground and Pavilion

- Liaison with Playscape
- New Site for the Feast
- Relocation for the Feast Services
- Increased use of the Pavilion

Highways

Key points in 2018-2019

- **SID** (Speed Indicator Device). We continue to rotate the equipment around the 12 locations in the village on a monthly basis. We are considering purchasing a fixed unit at a cost of £3000-£4000 which would likely be in the Station Rd / Hinton Way area.
- **LHI (Local Highways Initiative 2016)**. The new crossing in Woollards Lane was completed. CCC are undertaking a safety review which may result in a some safety surfacing on the crossing approaches. If they deemed it was needed the likely cost is in excess of £10,000
- **LHI 2016 associated works**. A number of “yellow line” changes have been implemented, areas in question are Westfield Rd, Stonehill Rd, Maris Green, High Green, Elms Avenue, Tunwells Lane, Ashen Green, Chaston Rd, Hinton Way, Mingle Lane, Leeway Ave, Orchard Rd, Buristead Rd, High Street, Church Street and Woollards Lane. CCC still need to complete the works at the High Green lay-by (some resurfacing and lining).
- **20mph Speed limit**. A new limit has been introduced within the central areas of the village (Woollards Lane / High Street / Church Street / Ashen Green / Buristead Rd).
- **LHI 2019**. Again the County made funds available for local projects and the Parish Council made a bid for part funding of a central refuge on Cambridge Road (near Davey Crescent), the PC was not successful.
- **Car Parking**. This remains an issue in the village. We are still pressing SCD C to “de-criminalise” parking so that we can employ “traffic wardens” but to date SCD C have not progressed the matter with any urgency. We intend to investigate pay for parking on the two village car parks and we continue to engage with our Community Policing team to provide enforcement.

- **Road Markings.** You will note that the majority of Cambridge Rd white lines have been refreshed. Initially The PC was going to fund this work but because of the extensive pot hole work undertaken in Cambridge Rd it was funded by CCC.
- **Future Yellow Lining / TRO.** We have submitted proposals to CCC for additional DYLS in Spinney Drive, Leeway Ave, Chaston Rd, Redhill lane, Woollards Lane, The Hectare, Poplar Close, Church Street, Cherry Trees and Hinton Way. It is also proposed to make the “loading bay” in Woollards Lane HGV only due to constant misuse.
- **Bus route 7A :** this route has been amended to give a service from Great Shelford to Trumpington. Unfortunately Stagecoach will not allow the operator to use their bus-stops so it is not possible to use the bus beyond Tunwells lane, the PC is attempting to change the situation.
- **Grass Cutting.** Previously the PC undertook around 80% of the cutting in the village with SCDC undertaking the remainder. From 1st April all cutting will be controlled by the PC ensuring a better service.
- **Station Rd / Hinton Way Rail Crossing :** The PC has funded a number of signs for residents encouraging vehicles to switch off to reduce emissions around the area of the crossing, we are working to get residents to mount the signs on individual properties.
- **High Green Bus Information Boards :** two boards are now operational.

Agenda Item 7.

Reports from the Village's representatives bodies:

- Stapleford & Great Shelford Neighbourhood Plan (Barbara Kettel)
- Playscape
- Governing Body of Great and Little Shelford Primary School
- Governing Body of Sawston Village College
- Great Shelford Community Association
- Mobile Warden Scheme (David Nunn)
- Shelford and Stapleford Youth Initiative (Zac Britton / John Greaves)
- Great Shelford Village News (Judith Wilson)
- Great Shelford Cricket Club (Brian Higgins)
- Great Shelford Football Club
- Shelford & Stapleford Strikers Football Club
- Great Shelford Bowls Club
- Great Shelford Parochial Charities
- Twinning Association (Colin Jefferson)
- Great Shelford Tennis Club
- Great Shelford Feast (Duncan Grey)
- Scouts & Guides
- Great Shelford WI
- St Mary's Bell Ringers

Note: No report received from Police

Neighbourhood Plan

Having completed a parking survey in Great Shelford, Barbara Kettel took over the Chairmanship of the NP from Peter Fane as he moved on to become a District Councillor. During this last twelve months the Steering Group (made up of Bridget Hodge, Ian Hodge, Jim Rickard, Frank McGilly and Katherine McGilly, Brian Scally and for some of the year Nigel Pett met regularly to progress the various stages of compiling a NP.

We worked with Cambridgeshire ACRE to understand the requirements of the procedure and to draft the survey questionnaire. We are about to open this questionnaire for completion by all residents of both villages on May 1st. This will be an online survey but we will have paper copies available for anyone who is unable to use the online version. We are very grateful for the assistance of Lesley Watts, the Stapleford assistant Clerk, as our personal assistant. Both village magazines have publicised this, and we have circulated all households with the information. The electronic newsletter and both magazines will contain the instructions for completion.

We held a workshop in November to introduce the Landscape Character Assessment which has been completed for us by Sophie O'Hara Smith.

Bridget and Ian have taken responsibility for this theme of the Plan, I am responsible for the Traffic and Transport theme and Brian Scally for the Housing theme. We have all contributed to the questions on the survey and are excited to work on the responses in the near future. These responses will be the evidence for the NP draft which we hope to submit in the Autumn prior to a further public consultation and hopefully ratification by the end of the year. These dates are very optimistic but we are aware of the threats to our Parishes from many different development issues and are anxious to get the Plan adopted as soon as possible.

Playscape



Great and Little Shelford Primary School

- New Headteacher, Mr Chris Grey
- Other staff changes
- Pressure on school places
- Remaining with the LA rather than pursuing academization
- Thriving PTA, chaired by Alison Melton

Peter Ede
Chair of Governors

Sawston Village College

- The College appointed Jonathan Russell as the new Principal from September 2019
- The previous Principal was appointed as Chief Executive of Anglian Learning, the seven school Multi Academy Trust that the College is a member of.
- Sadly former Principal John Marven died in August 2018. John was dedicated to upholding Henry Morris' vision of life-long community education and laid the foundations for the modern successful College that we have today. The Spicers' Theatre was re-named the Marven Centre and hosts many cultural and community events, such as regular National Theatre Live evenings, SYD senior pupils' production of Annie, the weekly Friday Carol Singers and the village Youth Club.
- Adjacent to the Marven Centre Cambridgeshire County Council plan to build a Community Hub providing a library and children's services for the whole community. After many frustrating delays construction is expected to commence in July 2019.
- For entry in Sept 2019 all 210 places are taken (Year 7) with several pupils on the waiting list. At present we have 237 pupils in Year 7 who joined in Sept 2018 and they have made an excellent start to their life at the College. Total pupils numbers are 1055.
- Because of growing demand for places we will be increasing from seven to eight form entry from 2020 and we are busy developing an ambitious growth plan for the site.
- Our academic achievements in August 2018, results have placed us in the top five performing schools in the East of England region for the Progress 8 score of +0.6. Altogether, 77% of pupils achieved a grade 4 or better in English and Maths, while 68% achieved a grade 5 or better. 37% achieved grades 9-7 in the new examination, with 8% of all grades being awarded at the highest grade. The progress made by pupils between Year 6 and Year 11 was well above the national average and once again confirmed the positive impact we are having on young people. We will never be complacent and know that we have much work to be done to ensure all young people succeed, especially those from the most disadvantaged households in our community.

- We have a strong staff professional development ethos. This year we have been focusing on evidence-based research, applying strategies from cognitive science and a forensic investigation of the curriculum. Many of our staff have become GCSE examiners, some are completing Masters in Education and others have supported other schools or departments through coaching or by being Specialist Leaders in Education. We are involved in an Erasmus pan-European project exploring critical thinking at KS3. All these developments, we hope will lead to improved quality of education and strong outcomes.
- Schools are so much more than academic success. Our broad and balanced curriculum is matched by our extensive enrichment programme and the highly personalised pastoral support and care given to all pupils.
- As an Artsmark Platinum school, we are particularly proud of our arts provision. This year we have seen stellar musical performances at Great St Mary's, West Road and Stapleford Granary. Our young film makers were nominated for a prestigious award and enjoyed an evening with the stars in Leicester Square. Our drama pupils have been involved in various productions, including the Shakespeare Schools' Festival and a fitting tribute to the 100th anniversary of the end of World War 1 in Oh! What a Lovely War! As always, we have also been highly entertained by the numerous SYD musicals including 'Annie'. Elsewhere, we have had several STEM activities, encouraging young people to engage in Science, Technology, Engineering and Mathematics; we have a weekly well-attended club with regular visiting scientists. Our PE department is also enjoying another successful year, with very high rates of participation and numerous wins in cup competitions in football, rugby, hockey, dodgeball and many other sports. Residential trips have taken place to the Eden Project, Berlin, Germany, Spain and the Battlefields of Northern France. Large numbers of pupils take part in the Duke of Edinburgh's Scheme and other clubs include debating, knitting, Warhammer, gaming, computer coding, FenSoc, Amnesty, eco forum to name just a few.
- We have a thriving Sports Centre and are looking to secure funding for some refurbishment. College funding is a constant challenge as is the national crisis in teacher recruitment, at present we are managing these issues.

Community Association

It has been another busy year for the Gt. Shelford Memorial Hall under the Chairmanship of Simon Sparrow.

Bookings for the Memorial Hall are still at a premium and very often we are unable to accommodate all enquiries. During the week there is only one half day which is not booked on a regular basis.

It is worth noting that the upkeep and continual improvement of the facilities available at the Memorial Hall for the use of all the community is dependent entirely on the income from bookings.

Of particular importance are those bookings that are made on a regular basis throughout the year.

After several meetings and discussions between the Sports and Social Club and the Gt. Shelford Community Association, it was agreed that the Lease of the Sports and Social Club currently held by the Community Association should be relinquished to the Gt. Shelford Parish Council with effect from the 31st December 2018.

During the current year there has been a lack of communication with the Parish Council, but hope that we have now resolved the various issues relating to the future of the Memorial Hall. There are currently ongoing discussions regarding a Public Toilet for the use of the community

We now have a coded system for entry to the Hall by way of the kitchen door. However, we must emphasise yet again that personal belongings are not covered by our Public Liability Insurance.

We thank everyone for their support and look forward to another busy and successful year.

Sheila Tilbury-Davis

Secretary, Gt. Shelford Community Association

Mobile Warden Scheme

A summary of the work load of the 2 Wardens over the last 12 months:

- At present we have 21 full time members and 18 part time members. However, over the last 12 months we helped 47 individuals in our community who used our service. The difference is individuals who became part-time members for a short period.
- Over 12 months we made almost 3000 telephone calls to check on people's welfare in the mornings.
- We carried out almost 1500 visits during the year which has helped reduce social isolation and loneliness. We provided help when members were unwell or had an emergency and organised additional services when needed. We also help with shopping, organising and collecting prescriptions and any other practical tasks.

David Nunn
Treasurer

S&SYI



SSYI – Annual Report

Zac Britton (Youth worker)

About SSYI	Highlights this year
<ul style="list-style-type: none">• Estd. 1997. Activities for youth in the area aged 10-18; 3 youth workers, 4 young leaders + volunteers. Budget £45k / yr• Partnerships with Romsey Mill, St Andrews Stapleford, Playscape• Regular activities (weekly): we run two Friday evening clubs, plus RED, Shred it Up, Detached work, Mentoring• Trips, Community activities, and Residentials	<ul style="list-style-type: none">• Developing work within Sawston Village College• Milton Jones Fundraising event• 4 day residential in Norfolk for 17 young people• Increased 1:1's• Skate Park Trip, North Pole, Copse Activities• Community activities: Shelford Feast; Little Shelford & Stapleford village weekends; Summer Garden Party; Big Breakfast• Cara Coffee opening – potential collaborations• “full -time” Lease of Gt. Shelford Social Club

Thank you for the support of the Parish Councils, churches, and individuals

Check out our website at www.ssyi.clu

GREAT SHELFORD VILLAGE NEWS

Great Shelford VILLAGE NEWS

EST 1999 FEBRUARY 2019 PRICE 40p

Great Shelford People and Services: An Appreciation



Barclays Bank Great Shelford

Public Meeting on Proposed Bank Closure

SAWRUG: Shelford Station Campaign

- We have 463 subscribers, including 21 from outside the village who receive their copies by post.
- We have 26 distribution rounds.
- We donate to local charities including Playscape, Friends of the Library and the Mobile Warden Scheme.
- We would like to thank all who contribute to the production of the magazine – our contributors, advertisers, subscription manager, distributors, treasurer and proof-reader.
- This October is our 20th anniversary so watch out for a bumper issue!

Great Shelford Cricket Club

- Huge Expansion in Youth cricket: girls' teams and mixed teams at very age group from Under 9 to Under 15
- All Stars cricket programme aimed at 5-8 year olds on Gt Shelford Recreation Ground starting on Saturday mornings in May
- Three adult teams playing in CCA Senior One, CCA Junior Three South and CCA Junior Four West
- We play at Great Shelford and at Stapleford Recreation Grounds.
- We are always looking to recruit new members especially from Great Shelford and the immediate vicinity

Contact Brian Higgins at brian_higgins50@hotmail.com

Great Shelford Football Club

- The club was founded in 1912 and has two teams playing in the Cambridgeshire County League.
- The league is comprised of around 200 teams spread across 13 divisions.
- The first team play in the Premier Division of the league, having been a constant at that level for the past 50 years, the only club to do so over that period. Over the past five seasons they have been champions on three occasions and runners-up twice.
- As it stands the team are sitting on top of the league with three games to go. If we win them all we will win the championship for a record 17th time.
- The reserve team play five rungs down the ladder in Division 2A and are mainly made up of young players making their way in the sport.
- The season runs from late August to early May and there are games on the recreation ground most Saturdays. At first team home games drinks and snacks are on sale in the pavilion for both spectators and leisure users of the rec alike.
- Unfortunately, due to changing times we have had to relinquish our use of the room above the Memorial Hall but as it has been taken over by the SSYI we know it will continue to benefit the village.
- In July, as it has done for several years, the club put on a football based competition for attendees at the village feast.

Terry Rider
Chairman

Shelford and Stapleford Strikers Football Club

This season the club has supported 20 teams between our youngest age group – the mini strikers (U6/7) all the way through to our oldest age group of youth football, U18's.

We are now the largest youth football club in Cambridgeshire. We currently have over 280 players registered across these different age groups. Many of our age groups have multiple teams, which demonstrates how the club is flourishing at present. Currently, the teams play at 6 local venues - including Great Shelford Recreation ground.

This season (18-19) has seen 3 teams – U16, U17 and U18s, using the pitch on Gt Shelford Recreation ground. The U16s are currently on track for an unprecedented league and cup double!

The club would like to formally thank the Parish Council for the use of the recreation ground and pavilion facilities which are in excellent condition. We are able to operate a small catering function offering drinks and snacks at the weekends. This facility helps to raise much needed funds for the club. We look forward to working with the Parish Council and other recreation ground user groups in 2019/20.

John Swinton (SASS FC Chairman)

Great Shelford Bowling Club

The Club premises are situated behind the Sports Pavilion in the playing fields behind the Memorial Hall. Our premises consist of a 6 rink green and a pavilion. All the maintenance and repair work to the green, gardens and pavilion is carried out by our members during the bowls season and time available before and after the season starts. The Bowls Club Centenary celebration is in 2020.

Club membership, before subscriptions have been received are in the region of 42. This figure is approx. 7 down on last year. We are working hard to increase our membership with younger locals. Bowls is no longer a game only for the retired it has a much younger following now, that has been demonstrated within some local clubs who we play. Our subscriptions are £50 per annum for an adult £45 for a concession and membership is free for those 18 and under.

Funding has always been an issue the loss of membership has a significant effect. We are currently approaching local businesses where we have had some recent success. We run a couple of table top sales in the Memorial Hall which have been successful in the past but have recently been suffering from low footfall. We support the Feast who have always been generous in their donations and the South Cambridge Council have given us full relief on Non Domestic Rates. With our season starting in April we are concerned that the length of time the development of the local car park is taking, may limit the likelihood of new members visiting our open days this year.

As already stated we endeavour to support activities in Shelford. The Christmas light switch on evening, the Feast and any other event that we can support. We have a number of talented members who are available to train those who have never played Bowls and may be interested in becoming future members. Most Friday afternoons or evenings we have a roll up when those interested can come along and have a go. We play both friendly matches and competitively home and away we are in four local leagues, The Business House, Cambridge and District (Div 2) Meldreth and District and The Foxton League. All of which give members an opportunity to play on a number of interesting rinks over the year and meet many likeminded players in a friendly environment.

Alan Edwards Secretary Great Shelford Bowls Club

Great Shelford Parochial Charities

During the year the Trustees met on nine occasions. Special meetings were held to discuss the possibility of building more affordable homes to rent on Charity Land. The twentieth of fifty annual instalments of f22,000 was paid into the Capital Recoupment Fund which was established in accordance with the requirements of the Charity Commission, to recoup the expenditure from the permanent endowment of the Charities, for phases 1 and 2 of the development of properties at More's Meadow, Great Shelford. The development provides 28 bungalows and 4 houses. Routine and planned maintenance has been carried out to the Charities properties and gardens during the year. Financial help has been given to residents and groups, in considered cases of need, within the Parish of Great Shelford.

Shelford Twinning Association

- We have had another successful year in terms of the growth of activities, the growth in membership, 'balancing the books' through fund-raising activities and continuing to develop our links with Verneuil-en-Halatte. We received a very generous gift from the Shelford Feast Committee and Little Shelford Parish Council towards our children's activities which are much appreciated.
- Through the EU's Erasmus project there is an exchange between the Headteacher of Shelford School and a Head teacher from Verneuil-en-Halatte.
- 30th Anniversary celebrations of signing of the Twinning Charter - 6th/9th July with a community ceilidh jointly hosted by Shelford Feast and Shelford Twinning Association as well as the inauguration of the trees on 7th July.
- Thanks to Shelford Parish Council for their continued support

Great Shelford Tennis Club

GSTC – serving our local community

GSTC is an LTA-registered tennis venue with over 400 members.

Over 60% of our members live in Great Shelford, Little Shelford or Stapleford.

4no. floodlit courts maintained to an excellent standard.

GSTC – a club for the whole community

Membership types to suit those who like to compete as well as for the social players.

Over 400no. members.

Family membership scheme to encourage involvement.

Low cost Junior membership, Free mini tennis membership and welcome Trial Sessions to encourage participation.

Run Disability Sessions in connection with OWL in Sawston.

GSTC – Social and Competitive

14 hours per week dedicated court time in evenings and weekends reserved for social play.

We organise a fun open day, hold an annual dinner at a Cambridge College and run various fun tennis competitions through the year.

Members have the opportunity to obtain 'Wimbledon Tickets' through the club ballot

Cambs Summer League

8x Mens teams (2019 Division 1 Champions) , 5x Ladies teams, 5x Mixed teams.
Junior teams (Under 8 through to Under 16).

Winter League

5x Mens teams, 4x Ladies teams, 3x Mixed teams.

Vets League (over 45's)

3x teams.

We also hold internal Club Singles and Doubles Tournaments and run a club singles ladder.

GSTC – providing coaching excellence

Managed by Over&In (www.overandin.com).

Around 30 hours of group coaching provided per week.

Many hours of individual coaching provided per week.

Tennis camps in school holidays available for all local children.

O&I works with local schools to develop tennis provision.

GSTC – looking for opportunities to expand

The LTA recommends that a club with 4 courts would have approx. 240 members, GSTC currently has over 400.

Since we run a large number of teams in the Cambs league, court space is very limited in the evenings and at weekends, especially from April to September.

We have demand for additional adult and Junior mid-week evening group coaching.

Shelford Feast

Last year saw our 25th modern Feast but we were unable to avoid a clash with the football world cup, Wimbledon tennis finals and free concerts in Cambridge, so it was a great pleasure to find a friendly atmosphere on the recreation ground even if there were rather fewer people attending.

Our expenses have shot up in recent years, with good bands and good toilets both needing more payment, so we have had to reserve more funds for setting up, yet we were still able to give away **£11,800** to our good causes. That wasn't a record but it brings the total The Feast has donated since 1994 to £308,000! Following the closure of the local banks we made a successful transition to on-line payment for most good causes this year.

Thanks to the enthusiasm of our volunteers our programme has grown to include a wider range of ages and tastes including the daytime Ritzy Tea which returns this year and is not featured in the main advertising.

Looking forward to this year's Feast, we have an excellent programme with a wide range of events. We are increasing our use of cashless payments, to cope with the loss of the cash machines from the village. We also have new infrastructure on the recreation ground, which we hope will make connections to the power, water and sewers easier, cheaper and quicker. We are pleased to have contributed to the cost of these new facilities, which will provide a long-term benefit to the village.

Before all else, the Feast is a community event, providing entertainment, uniting and making friends. We are most grateful to our volunteers, neighbours and friends who support the Feast in so many ways from working behind the scenes to running events and simply accepting the activities going on around them.

The support of the Parish Council and our immediate neighbours is invaluable in facilitating the Feast and we look forward to many more years at heart of summer in Great Shelford.

See you at the Shelford Feast, 7-14 July 2019!

Andrew Heather, chairman.

Scouts & Guides

A year in Numbers

- 8 Groups with members ranging in age from 5 -18 years each held c30 weekly meetings in the Head Quarters building across 4 evenings
 - that's over 400 hours of FUN
- Supporting 114 young people and 34 volunteer leaders - all of whom live in Shelford (65%) or the surrounding villages
- Yet we have more than 120 young people on our collective waiting lists - think what we could do next year with more leaders and better facilities
- 2 jumble sales, 1 charity breakfast, 5 Feast stalls, 1 magnificent feast arena event and 7 quiz night runners
- Great facilities to support this activity is the key issue for us next year - and hopefully there will be 8 additional reports each more interesting than ours!

Great Shelford WI



- The Shelfords Women's Institute meets on the first Thursday of the month in the Community Room behind St Mary's Church
- We celebrated our 5th birthday in December
- We have a very interesting and varied programme
- We help at various events e.g. the Playscape Fun Run and the Feast
- Open to all women over 18
- **COME AND JOIN US AND MAKE NEW FRIENDS**



St Mary's Bell Ringers

Last year:

- Won Gipson Trophy with Little Shelford (see Square and Compass for evidence)
- Local outing - rang at 4 local towers
- Rang for School's 125th Anniversary
- Had a stall at the feast
- Rang for centenary of end of WW1
- Rang for a selection of significant birthdays and anniversaries

This Year:

- Defending Gipson Trophy - now without support of Lt Shelford band
- Will be ringing for more significant anniversaries etc - we are open to suggestions
- Major focus: Recruitment drive for new ringers!

Agenda Item 8.

Parish Council Financial Statement for Year 2018 to March 2019

The Parish Council accounts for the year April 2018 to March 2019 are in preparation for the external audit, when audit is completed they will be displayed on Local Media Websites and Notice boards during June to July 2019, in compliance with the Period of Exercise of Public Rights.

Based on the 2018/2019 End of Year Forecast

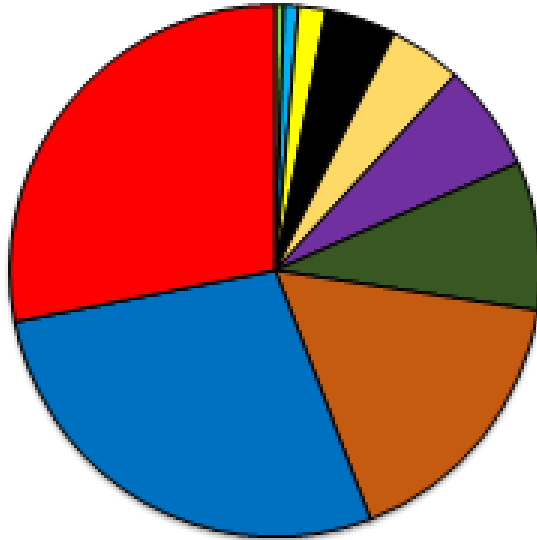
Expenditure for the year has fallen short of the Budget expectations due to Projects that have been started but remain uncompleted in this financial year thus in the majority remain un-invoiced.

These Projects extensively fall within the Recreation Ground and Highways Budget sections.

An underspend of £111,590 in 2018/19 was forecast as carry forward into 2019/20 to provide funding for the completion of these projects. Late arrival of some invoices towards the end of March 2019 will reduce this carry forward of the underspend when the final Audit takes place.

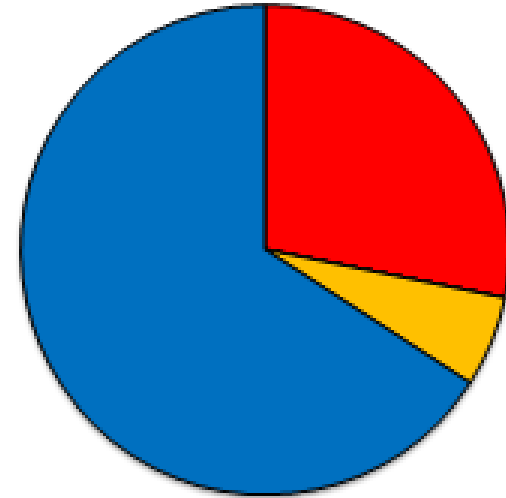
The distribution of Budget expenditure and how the year was funded is shown below

2018 / 2019 BUDGET



ALLOCATION	KEY	2018 / 2019	%
Allotments		£1,735	0.5%
Plant & Tools		£2,900	0.9%
Cemetery		£5,650	1.7%
S137 Grants		£14,250	4.3%
Planning		£14,750	4.4%
Pavilion		£21,663	6.5%
Contribution to Reserves		£30,000	9.0%
Administration		£55,623	16.8%
Highways		£92,036	27.7%
Recreation Ground		£93,280	28.1%
TOTAL		£331,890	

2018 / 2019 FUNDING



FUNDING	KEY	2018 / 2019	%
Underspend Prev Year		£93,470	28.2%
S106 Receipts		£0	0.0%
Gen Contingency (Saving)		£0	0.0%
Contribution from Reserves		£20,000	6.0%
Precept		£218,420	63.8%
TOTAL		£331,890	

Assets: have increased from £2,120,933 to £2,844,330 due to a physical revision and some minor expenditure during 2018/2019 but have no impact on the general accounts of the Parish Council.

Borrowings: The Pavilion build accounts for the entire amount and is a reducing debt for the Parish Council at favourable rates from the Public Works Loan Board currently standing at £60,626 at end March 2019. The Parish Council will make a reducing annual provision to cover the full cost of the PWLB repayment should interest rates make this a financially beneficial action in the 2018/19 budget.

I would like to thank all Parish Councillors for their diligent activity during the year and their efforts to deliver a challenging Budget plan.

Mike Winter
Parish Clerk

Agenda Item 9.

Items not on the agenda which residents wish to debate with the Parish Council.

Agenda Item 10.

Close Annual Parish Council meeting.

Agenda Item 11.

Refreshments and informal discussion.

Please feel free to approach any member of the Parish Council with any subject and get to know them so they can know you and your views on any subject.